

Horn I
BEETHOVEN Symphony No. 7
Mvt. I

in A

88 *ff*

96 1-8 2 3 4 5 *p cresc.*

106 6 7 8 *ff*

Horn I
BRAHMS Symphony No. 1
Mvt. II

in E

f **E** *cresc.*

94 *f pp f p espr.*

102 *cresc. mf* **F**

Horn I
MAHLER Symphony No. 3
Mvt. I

in F

Mit höchster Kraft.
rit. 29 a tempo Nicht breit.
30
rubato sempre ff a tempo
string. mit aufgehob. Schalltr.
31
acc. a tempo mf dim. Vorwärts!!!
gestopft 2 gest. 2 gest. gest. 32 offen stacc. 3
ff ff fff fff p fff Mit höchster Kraft - Vorwärts
entfaltung. sempre fff acceler. dim.
3

Horn I

MOZART Symphony No. 40

in G

Mvt. III

MENUETTO

Allegretto

9 *f*

21 *f* 1 1

34 3 *p*

Trio 17 4 Fl. *8va* *p*

30 *cresc.* *f* *p* *Da Capo Menuetto*

Horn I

SHOSTAKOVICH Symphony No. 5

in F

Mvt. I

f

18 *poco animando*

19 *mp*

20 1 21 *f* *ff*

Horn I
STRAUSS Ein Heldenleben

Excerpt 1
in F

Lebhaft bewegt.

f

3

3

3

1

sfz

Excerpt 2
in F

78

ff

79

Horn I
TCHAIKOVSKY Symphony No. 4
Mvt. I

in F

Andante sostenuto

Musical score for Horn I, measures 1-20. The score is in 4/4 time and F major. It begins with a dynamic of *ff*. The first line (measures 1-5) features a melodic line with triplets and accents. The second line (measures 6-13) continues the melodic development. The third line (measures 14-19) includes a key signature change to A major (marked 'A') and dynamic markings of *f*, *mf*, and *p*. The fourth line (measure 20) shows a final melodic phrase.

Horn II
TCHAIKOVSKY Symphony No. 4
Mvt. I

in F

Andante sostenuto

Musical score for Horn II, measures 1-20. The score is in 4/4 time and F major. It begins with a dynamic of *ff*. The first line (measures 1-5) features a melodic line with triplets and accents. The second line (measures 6-13) continues the melodic development. The third line (measures 14-19) includes a key signature change to A major (marked 'A') and dynamic markings of *f*, *mf*, and *p*. The fourth line (measure 20) shows a final melodic phrase.

Horn III
BERLIOZ Romeo and Juliet
Queen Mab Scherzo

in Bb

Musical score for Horn III in Bb, Berlioz Romeo and Juliet Queen Mab Scherzo. The score consists of three staves of music. The first staff begins with a treble clef and a 3/4 time signature. It features a triplet of eighth notes marked *p* and another triplet of eighth notes marked *p*. The second staff also begins with a treble clef and a 3/4 time signature. It contains a triplet of eighth notes marked *pp* and a boxed measure number **59**. The third staff begins with a treble clef and a 3/4 time signature, featuring a pair of eighth notes marked **2**.

Horn III
DVORAK Cello Concerto
Mvt. II

in C

Musical score for Horn III in C, Dvorak Cello Concerto Mvt. II. The score consists of two staves of music. The first staff begins with a treble clef and a 3/4 time signature. It features a triplet of eighth notes marked *p* and another triplet of eighth notes marked *p*. The second staff also begins with a treble clef and a 3/4 time signature. It contains a triplet of eighth notes marked *pp* and another triplet of eighth notes marked *pp*. The tempo marking **Meno Tempo I.** is present at the beginning of the first staff.

Horn III
DVORAK Symphony No. 9

Mvt. I

in C

Musical notation for the first staff of Mvt. I, Horn III part. It features a treble clef, a key signature of one sharp (F#), and a 4/4 time signature. The melody begins with a dynamic marking of *p* (piano) and includes accents (>) over several notes. A first ending bracket labeled '1' is shown at the end of the staff.

Musical notation for the second staff of Mvt. I, Horn III part. It continues the melody from the first staff, featuring dynamic markings of *p* and *f* (forte). A triplet of eighth notes is marked with a '3' above it. The staff concludes with a first ending bracket labeled '1' and the word *attacca* written below the staff.

Musical notation for the third staff of Mvt. I, Horn III part. It begins with the tempo marking **Allegro molto.** and a 4/4 time signature. The melody starts with a dynamic marking of *mf* (mezzo-forte) and includes accents (>) over several notes.

Mvt. III

in E

Musical notation for the first staff of Mvt. III, Horn III part. It features a treble clef, a key signature of two sharps (F# and C#), and a 3/4 time signature. The melody begins with a dynamic marking of *f* (forte) and includes accents (>) over several notes. A triplet of eighth notes is marked with a '3' above it. The staff concludes with a dynamic marking of *ff* (fortissimo).

Musical notation for the second staff of Mvt. III, Horn III part. It features a treble clef and a 3/4 time signature. The melody consists of a series of eighth notes, starting with a first ending bracket labeled '1' at the end of the staff.

Musical notation for the third staff of Mvt. III, Horn III part. It features a treble clef and a 3/4 time signature. The melody begins with a dynamic marking of *p* (piano) and includes accents (>) over several notes. A first ending bracket labeled '1' is shown at the beginning of the staff. The staff concludes with a dynamic marking of *dim. pp* (diminuendo pianissimo).

Horn III
DVORAK Symphony No. 9

Mvt. IV

Excerpt 1
in E

Excerpt 1 musical notation, Horn III, in E. The notation consists of three staves. The first staff starts with a dynamic marking of *f* and a hairpin crescendo leading to *ff*. The second and third staves continue the melodic line with various dynamics and articulation marks.

Excerpt 2
in E

Excerpt 2 musical notation, Horn III, in E. The notation consists of three staves. The first staff starts with a dynamic marking of *ff* and a hairpin crescendo leading to *f*. The second and third staves continue the melodic line with various dynamics and articulation marks. The third staff includes dynamic markings of *fp*, *dim.*, *mp*, and *dim.*

Horn III
MENDELSSOHN Symphony No. 3

Vivace non troppo

Excerpt 1
in F

Mvt. II



Excerpt 2
in F



in D

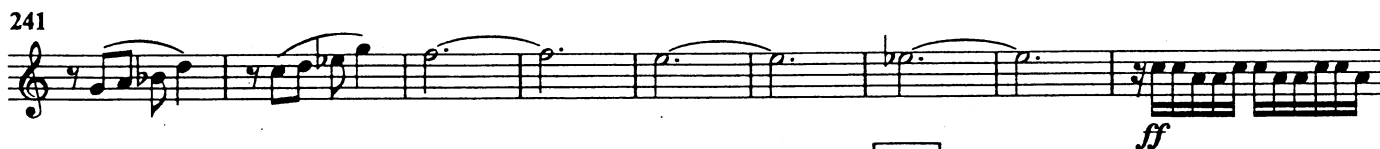
Mvt. III



Horn III
SAINT-SAENS Symphony No. 3
Mvt. I

Excerpt 1

in F



Excerpt 2

in F

Poco adagio



Horn III
STRAUSS Til Eulenspiegel

Volles Zeitmass.
in D.



6

29 *marcato* *mf* *fp* 5 *in F* *mf* *fp* 1

30 *f* *mf*

f *f* *mf cresc.* 1

ff *f* *ff* *ff*

31 *molto marcato* *ff* *ff*

ff 3

mf 1 33 15 34 3 *pp*

in E. *p* *cresc.* 1 *b* *1* *b* *35* *fp* *cresc.* *in F.* 1

f *ffp* *cresc.* *f* *mf* *cresc.*

36 *ff* *fff* *ff* *f* *cresc.*

37 *immer ausgelassener und lebhafter* *ff* *ff*

ff

fff

Horn III

WAGNER "Siegfried's Rhine Journey"

in F

7 *Rasch.* (♩ = ♩)

BEETHOVEN Symphony No. 3

Mvt. III

in Eb

Horn II

Trio

Soli 167

178

190

in Eb

Horn III

Trio

Solo 167

180

193

ROSSINI Overture to Semiramide

in D

Horn I

Andantino

43 **B** Solo

p dolce

50

57

64

81

88

dolce

p *mf* *ff*

mf *ff*

10

in D

Horn III

Andantino

43 **B** Solo

p

53

60

66

86

p *mf* *ff*

p *mf* *ff*

14

TCHAIKOVSKY Symphony No. 5

Mvt. IV

in F Horn II

ma marcato
p
piu f
mf
f
simile

30 *pp cresc.*

37 *simile*

WEBER Overture to Der Freischutz

in C Horn III

solo
mf

13

20

in C Horn IV

solo
mf

13

20

Horn VIII

WAGNER Das Rheingold

in Eb

The musical score for Horn VIII in Eb from Wagner's Das Rheingold consists of six staves of music. The first staff begins with a bass clef and a dynamic marking of *p*. The second and third staves alternate between bass and treble clefs. The fourth staff returns to a bass clef and includes the dynamic marking *sempre p*. The fifth and sixth staves alternate between treble and bass clefs. The music is characterized by a melodic line with various dynamics and articulation marks.